

# PIGMENT IMAGE DATABASE UNDER UV AND IR RADIATIONS

*Extract #7*

*CADMIUM PIGMENTS : Red, Green, Yellow*

CENTRE DE  
RECHERCHE  
ET DE  
RESTAURATION  
DES MUSÉES  
DE FRANCE


Groupe Imagerie, département Recherche du C2RMF

Responsable groupe Imagerie : Clotilde Boust

Laurence Clivet, Jean-Louis Bellec, Jérôme Rumolo, Anne Wohlgemuth



## MISE EN GARDE CAUTION

Attention ! Nos données sont partagées à titre indicatif, et n'ont en aucun cas une valeur universelle. 

Nos données dépendent de plusieurs paramètres, notamment le matériel photographique utilisé, ainsi que le liant, le mélange, le vieillissement et la concentration des pigments. Avant d'utiliser ces données, merci de consulter notre article « Mémo des procédures photographiques » sur le site internet [www.copa.hypotheses.org](http://www.copa.hypotheses.org). Vous aurez ainsi accès à toute la chaîne de production de nos images. Nous vous conseillons d'utiliser ces données avec la plus grande précaution.

Please, notice our data are shared for information only and do not constitute a universal database.

Our data depend on several parameters, including the photographic material used (camera and filter), and the mixture, the aging, and the concentration of the pigments. Before using this data, please read our article “memo of the photographic procedures” on [www.copa.hypotheses.org](http://www.copa.hypotheses.org). You will have access to the whole production chain of our images.

Please use this data with caution.



## CADMIUM PIGMENTS : KREMER PRODUCTION

### RED PIGMENTS

Kremer n° 21080	Cadmium Orange No. 0 very light, very lightfast, opaque
Kremer n° 21090	Cadmium Orange No. 0.5, light, very lightfast, opaque
Kremer n° 21100	Cadmium Orange No. 1, medium, very lightfast, opaque
Kremer n° 21110	Cadmium Orange No. 2, vermilion, very lightfast, opaque
Kremer n° 21120	Cadmium Red No. 1, light, very lightfast, opaque
Kremer n° 21130	Cadmium Red No. 2, medium, very lightfast, opaque
Kremer n° 21140	Cadmium Red No. 3, dark, very lightfast, opaque
Kremer n° 21150	Cadmium Red No. 4, bluish purple, very lightfast, opaque

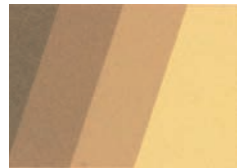
### GREEN PIGMENTS

Kremer n° 44500	Cadmium Green, light, mixture of cadmium yellow and ultramarine blue
Kremer n° 44510	Cadmium Green, dark, mixture of cadmium yellow and ultramarine blue

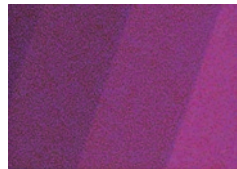
### YELLOW PIGMENTS

Kremer n° 21010	Cadmium Yellow Lemon No.1, very lightfast, opaque
Kremer n° 21020	Cadmium Yellow No. 2, very light, very lightfast, opaque
Kremer n° 21030	Cadmium Yellow No. 4 light, very lightfast, opaque
Kremer n° 21040	Cadmium Yellow No. 6, medium, very lightfast, opaque
Kremer n° 21050	Cadmium Yellow No. 8, medium dark, very lightfast, opaque
Kremer n° 21060	Cadmium Yellow No. 9, dark, very lightfast, opaque

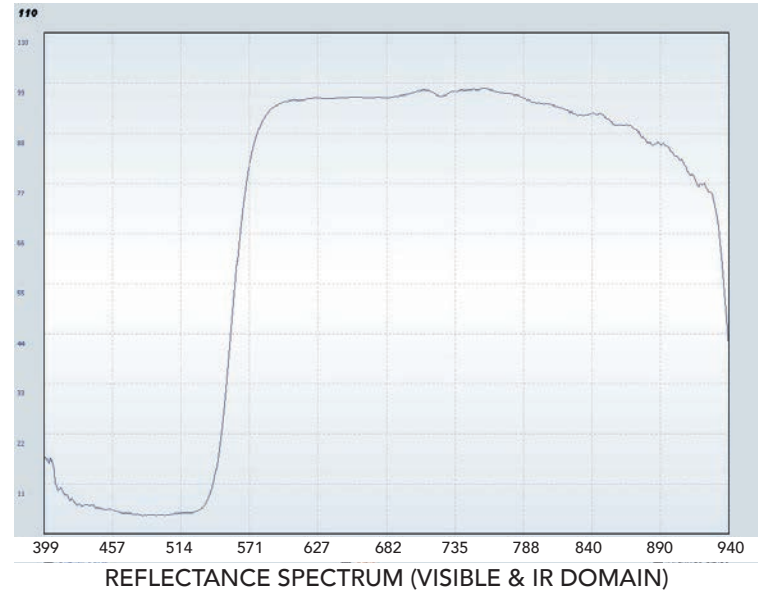
Kremer n° 21080  
Cadmium Orange  
No. 0 very light, very  
lightfast, opaque



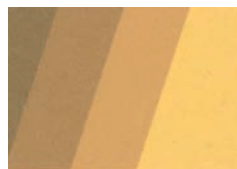
IRFC



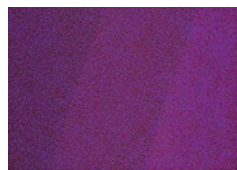
UVFC



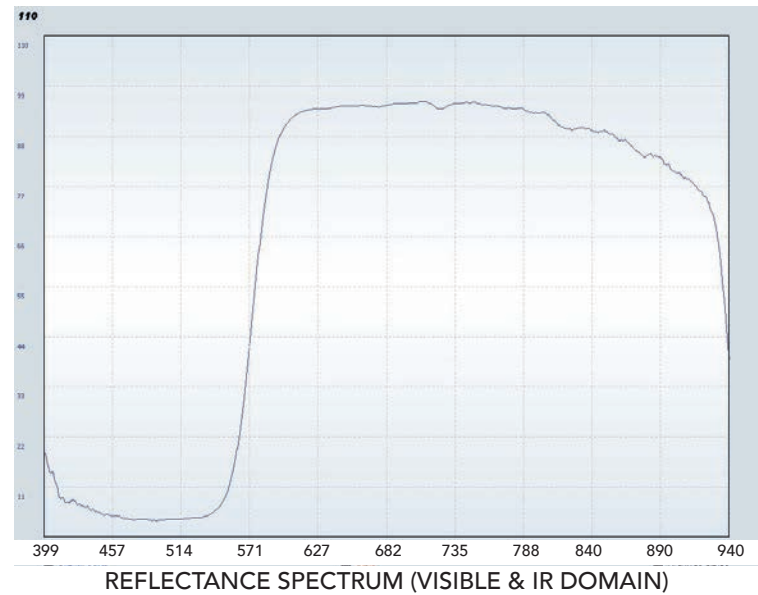
Kremer n° 21090  
Cadmium Orange  
No. 0.5, light, very  
lightfast, opaque



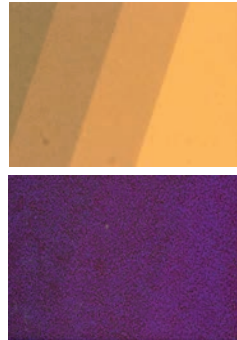
IRFC



UVFC

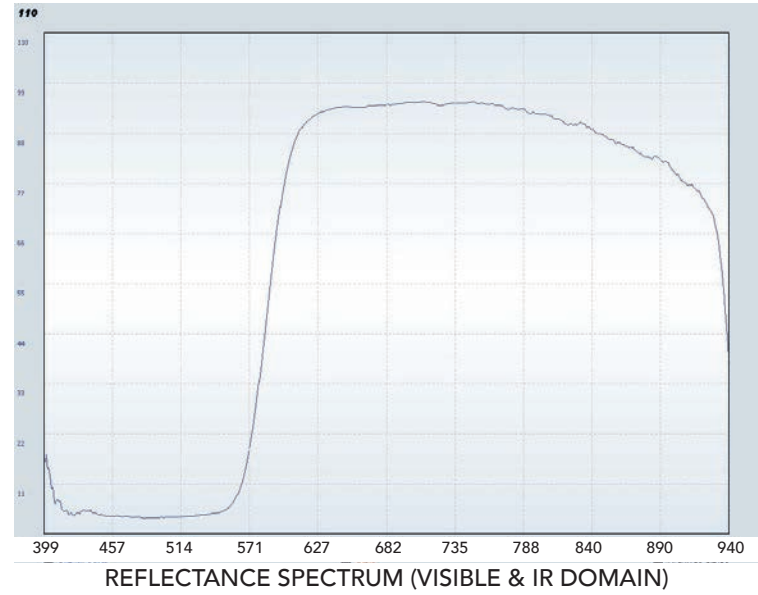


Kremer n° 21100  
 Cadmium Orange  
 No. 1, medium, very  
 lightfast, opaque

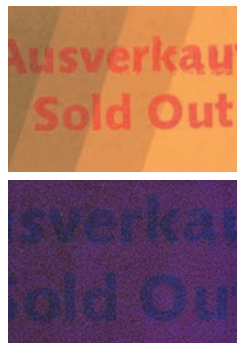
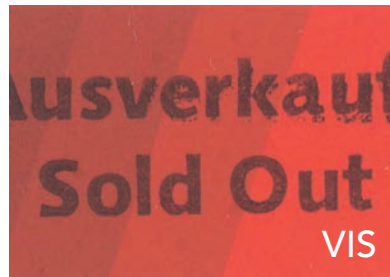


IRFC

UVFC

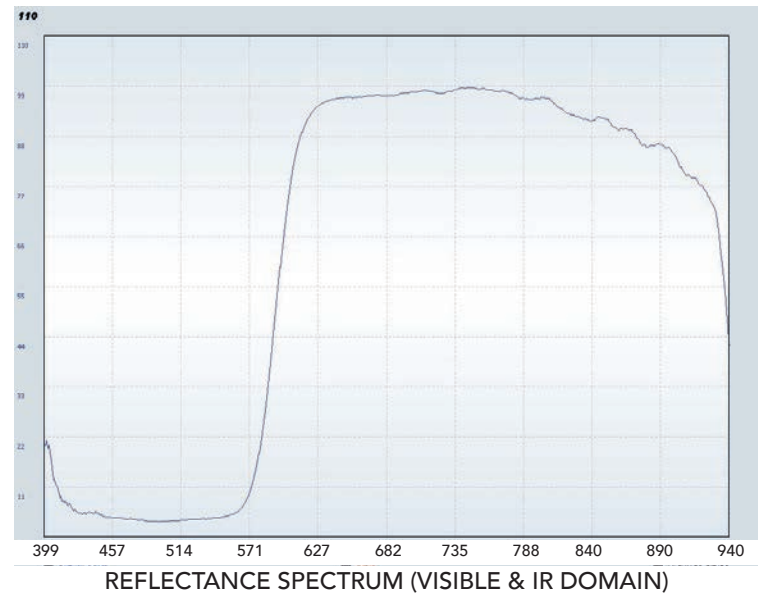


Kremer n° 21110  
 Cadmium Orange  
 No. 2, vermillion, very  
 lightfast, opaque

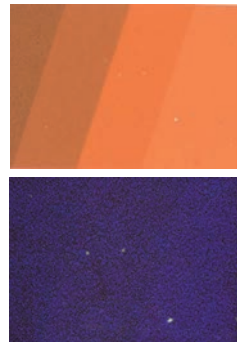
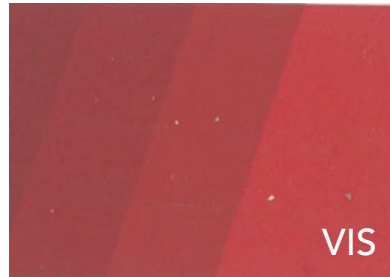


IRFC

UVFC

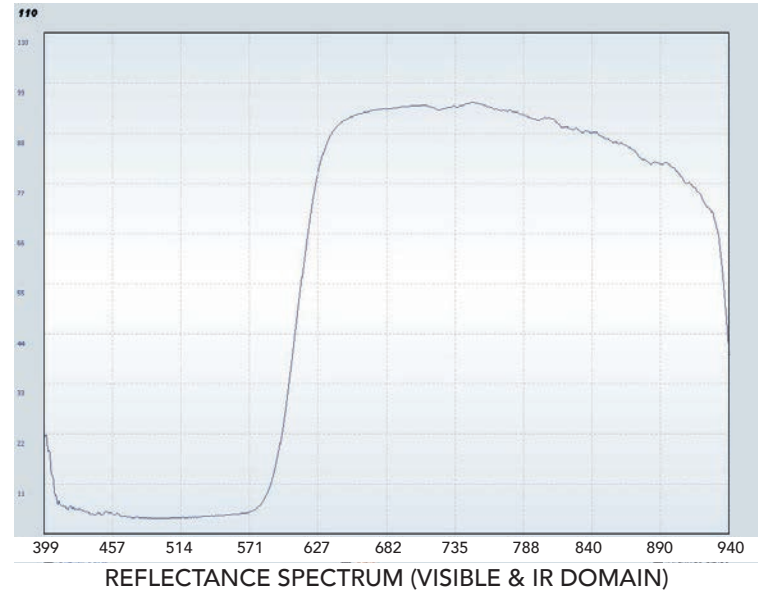


Kremer n° 21120  
Cadmium Red  
No. 1, light, very  
lightfast, opaque

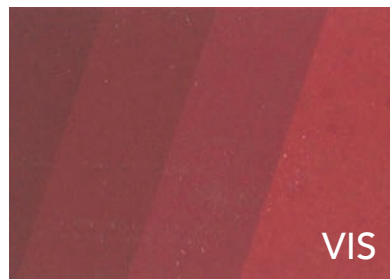


IRFC

UVFC

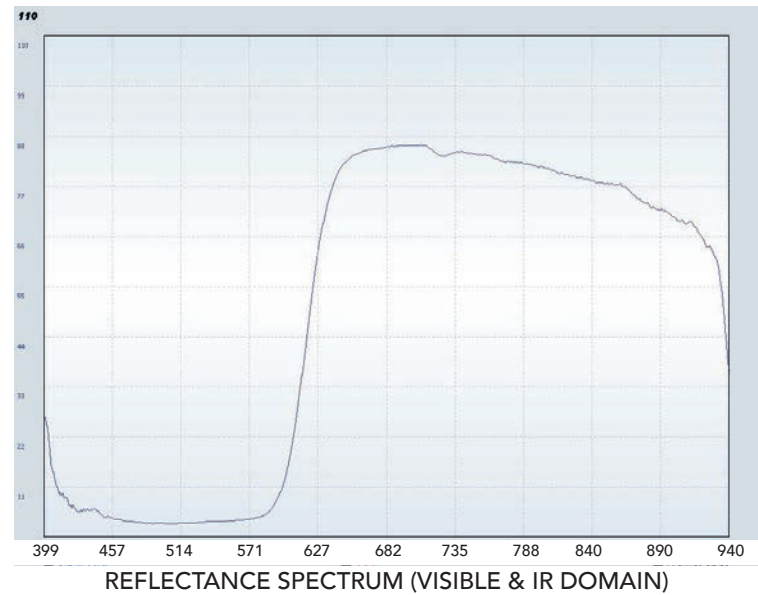


Kremer n° 21130  
Cadmium Red  
No. 2, medium, very  
lightfast, opaque

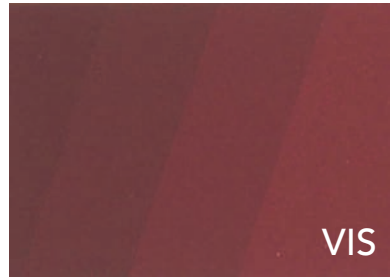


IRFC

UVFC

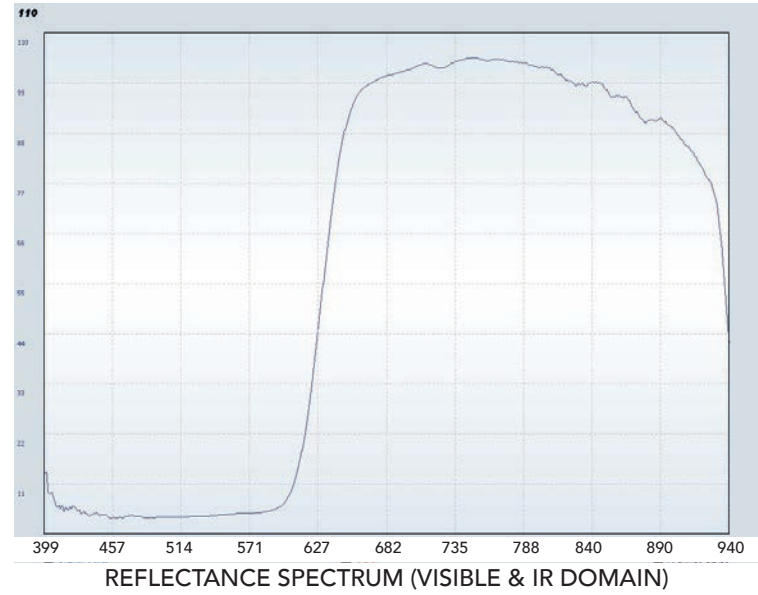


Kremer n° 21140  
Cadmium Red  
No. 3, dark, very light-  
fast, opaque

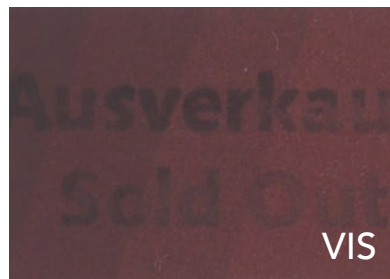


IRFC

UVFC

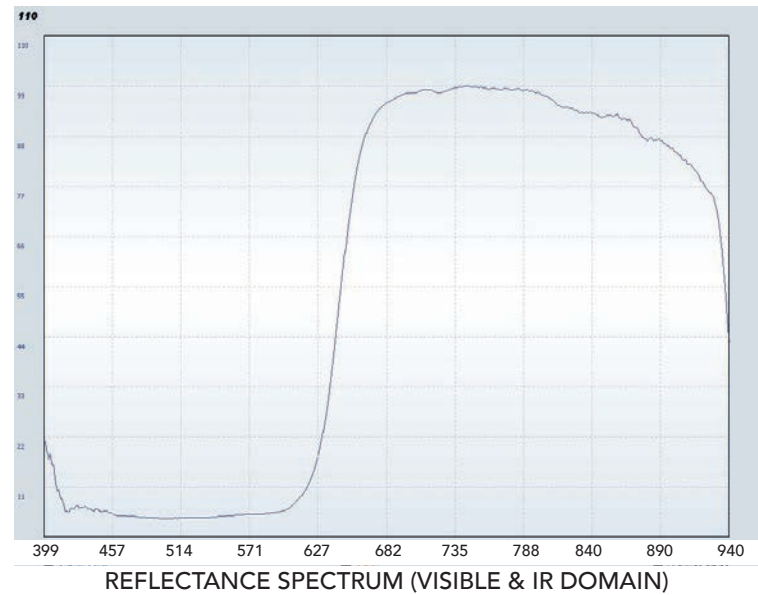


Kremer n° 21150  
Cadmium Red  
No. 4, bluish purple,  
very lightfast, opaque



IRFC

UVFC



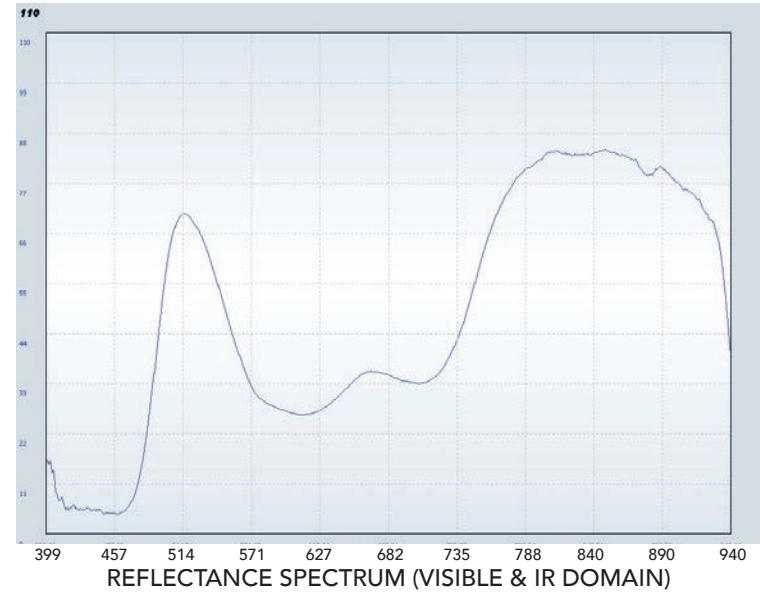
Kremer n° 44500  
 Cadmium Green, light,  
 mixture of cadmium  
 yellow and ultramarine  
 blue



IRFC



UVFC



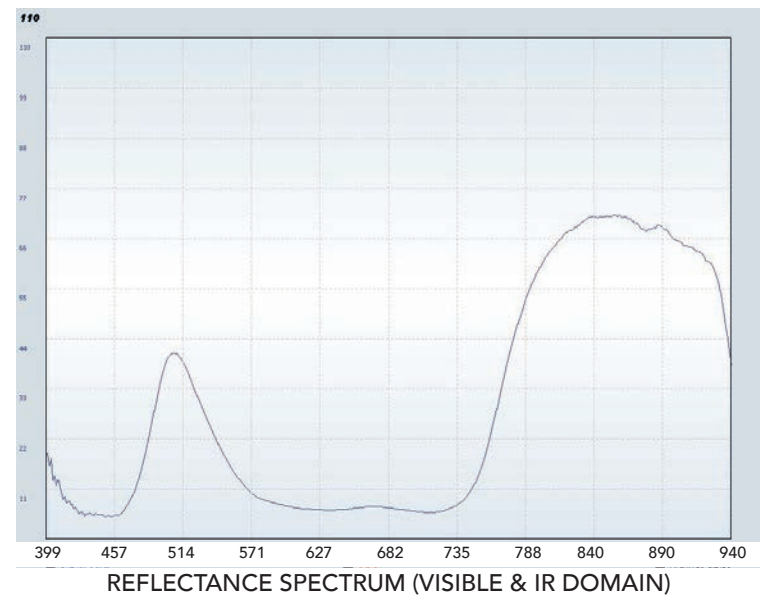
Kremer n° 44510  
 Cadmium Green, dark,  
 mixture of cadmium  
 yellow and ultramarine  
 blue



IRFC



UVFC

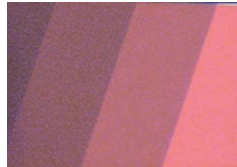




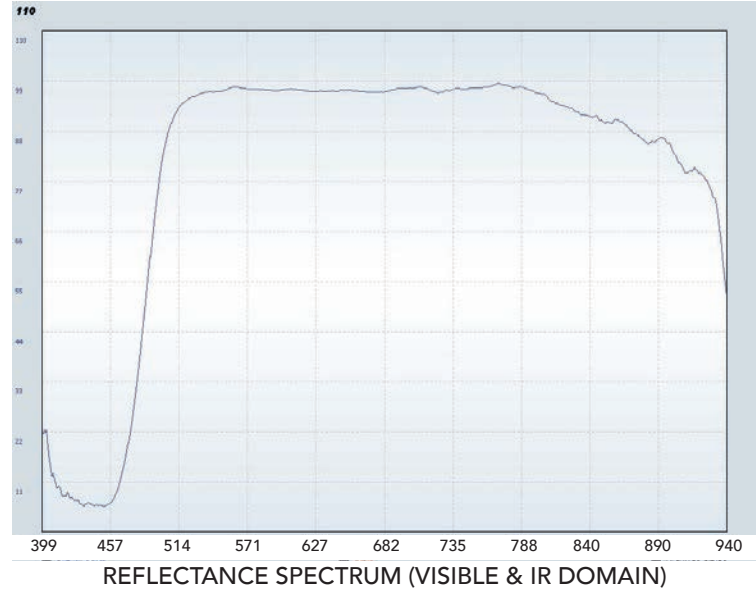
Kremer n° 21010  
Cadmium Yellow  
Lemon No.1, very  
lightfast, opaque



IRFC



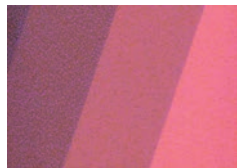
UVFC



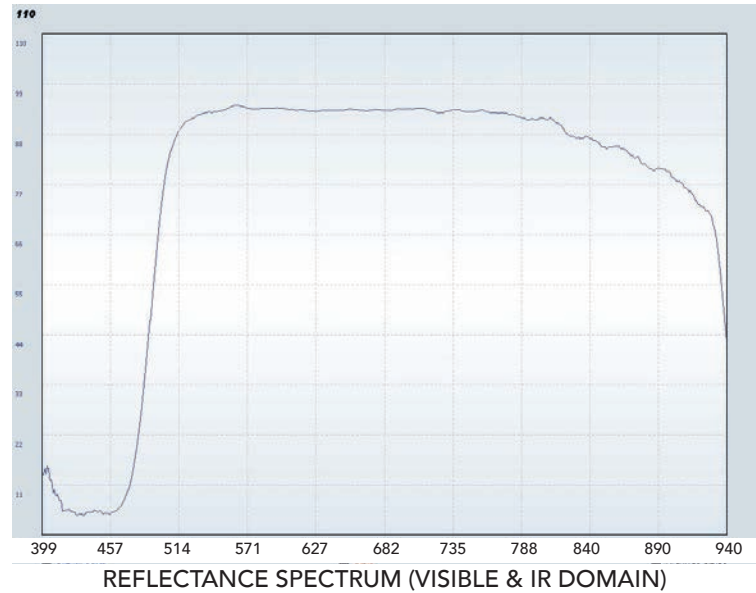
Kremer n° 21020  
Cadmium Yellow  
No. 2, very light, very  
lightfast, opaque



IRFC



UVFC



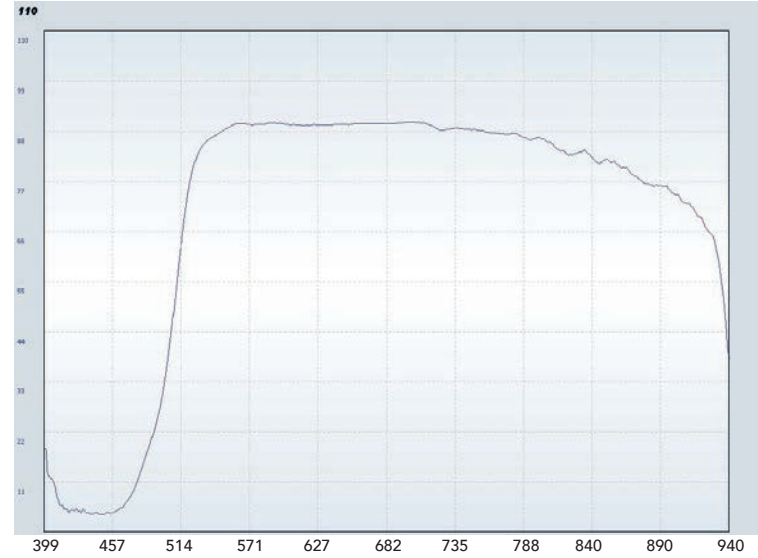
Kremer n° 21030  
Cadmium Yellow  
No. 4 light, very light-  
fast, opaque



IRFC



UVFC

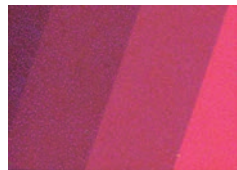


REFLECTANCE SPECTRUM (VISIBLE & IR DOMAIN)

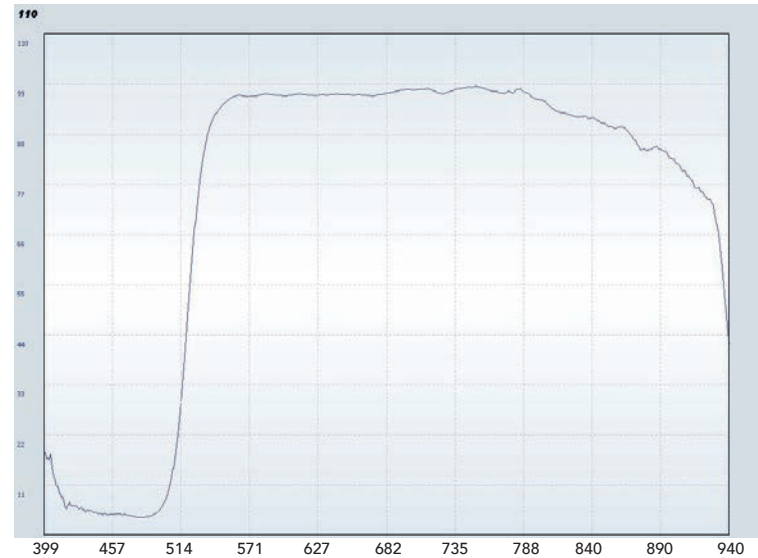
Kremer n° 21040  
Cadmium Yellow  
No. 6, medium, very  
lightfast, opaque



IRFC

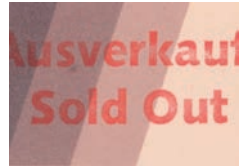


UVFC

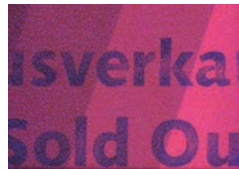


REFLECTANCE SPECTRUM (VISIBLE & IR DOMAIN)

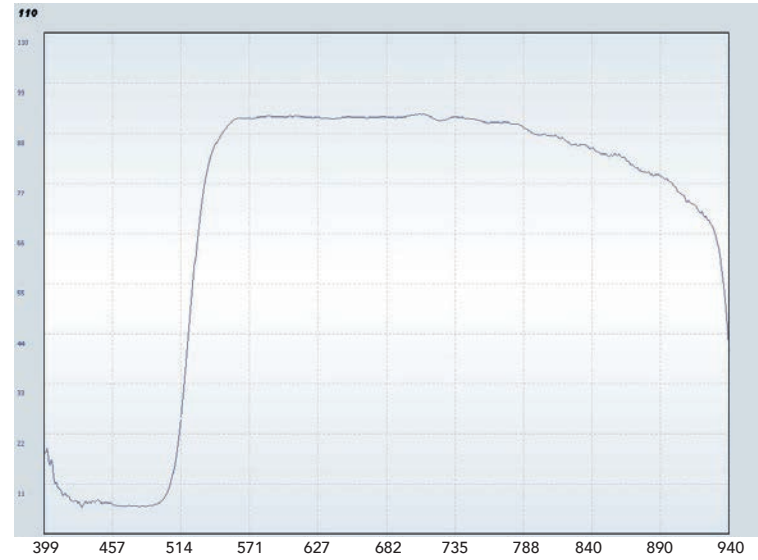
Kremer n° 21050  
 Cadmium Yellow  
 No. 8, medium dark,  
 very lightfast, opaque



IRFC

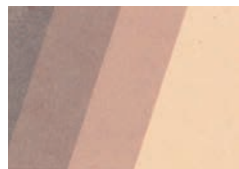


UVFC

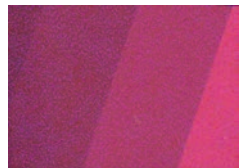


REFLECTANCE SPECTRUM (VISIBLE & IR DOMAIN)

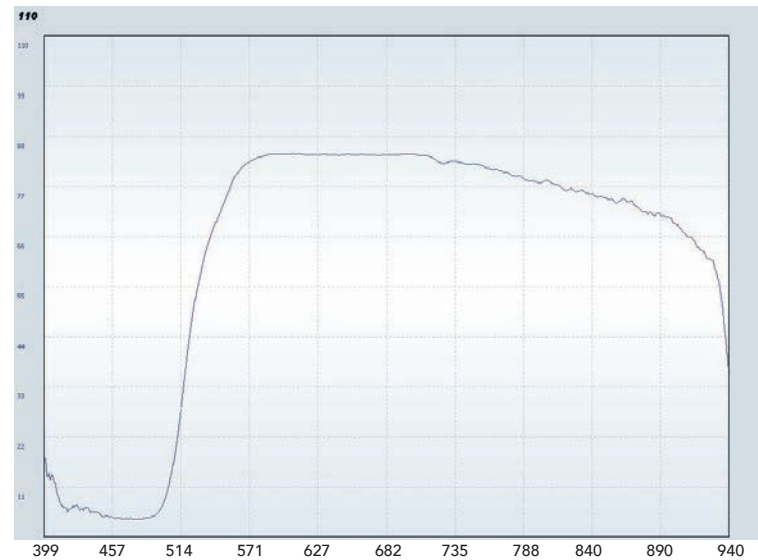
Kremer n° 21060  
 Cadmium Yellow  
 No. 9, dark, very light-  
 fast, opaque



IRFC



UVFC



REFLECTANCE SPECTRUM (VISIBLE & IR DOMAIN)