

PIGMENT IMAGE DATABASE UNDER UV AND IR RADIATIONS

Extract #5

Historical pigments : BLACK

CENTRE DE
RECHERCHE
ET DE
RESTAURATION
DES MUSÉES
DE FRANCE


Groupe Imagerie, département Recherche du C2RMF

Responsable groupe Imagerie : Clotilde Boust

Laurence Clivet, Jean-Louis Bellec, Jérôme Rumolo, Anne Wohlgemuth



MISE EN GARDE CAUTION

Attention ! Nos données sont partagées à titre indicatif, et n'ont en aucun cas une valeur universelle. 

Nos données dépendent de plusieurs paramètres, notamment le matériel photographique utilisé, ainsi que le liant, le mélange, le vieillissement et la concentration des pigments. Avant d'utiliser ces données, merci de consulter notre article « Mémo des procédures photographiques » sur le site internet www.copa.hypotheses.org. Vous aurez ainsi accès à toute la chaîne de production de nos images. Nous vous conseillons d'utiliser ces données avec la plus grande précaution.

Please, notice our data are shared for information only and do not constitute a universal database.

Our data depend on several parameters, including the photographic material used (camera and filter), and the mixture, the aging, and the concentration of the pigments. Before using this data, please read our article “memo of the photographic procedures” on www.copa.hypotheses.org. You will have access to the whole production chain of our images.

Please use this data with caution.

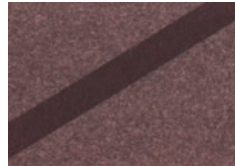


HISTORICAL PIGMENTS : KREMER PRODUCTION

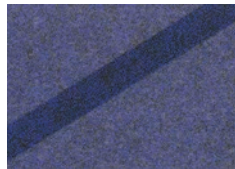
BLACK PIGMENTS

Kremer n° 10900	Galena, Gray-black lustrous powder, contains lead, toxic
Kremer n° 10930	Pyrite Powder Fine, 0 - 80 µm
Kremer n° 10940	Antimony, stibium, gray metallic, baroque, 0 - 200 µm
Kremer n° 11356	Gray from Mels, Switzerland
Kremer n° 11670	Onyx black, 0 - 120 µm
Kremer n° 12000	Ivory Black, Genuine Ivory Black, own production
Kremer n° 12010	Peach Black, genuine, matt black
Kremer n° 12015	Grape Black, genuine, bluish-black
Kremer n° 12020	Cherry Black, genuine, brownish-black
Kremer n° 12030	Atramentum, ink stone, black
Kremer n° 12100	Bistre, genuine beechwood soot
Kremer n° 12400	Sepia, from adriatic cuttlefish, raw, dry, 0 - 120 µm

Kremer n° 10900
Galena, Gray-black
lustrous powder, con-
tains lead, toxic



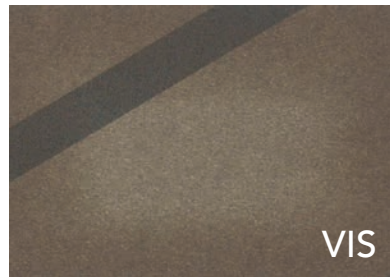
IRFC



UVFC



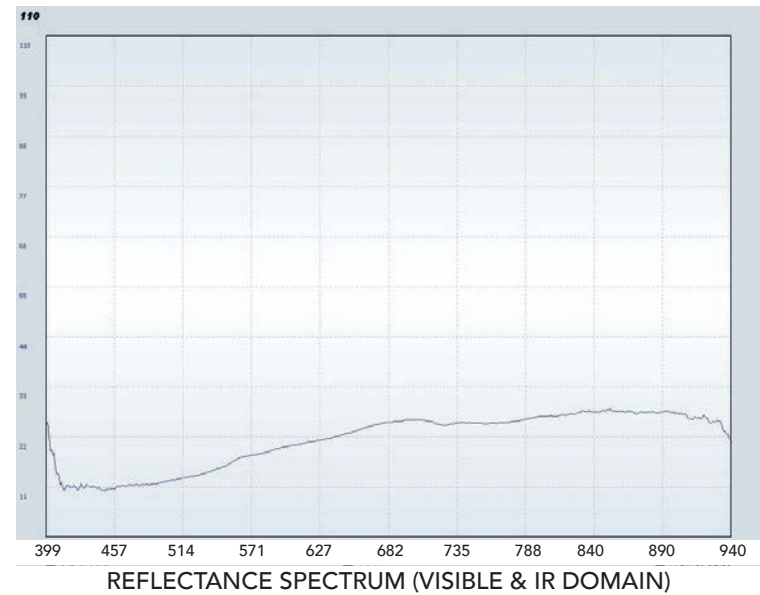
Kremer n° 10930
Pyrite Powder Fine,
0 - 80 μm



IRFC



UVFC

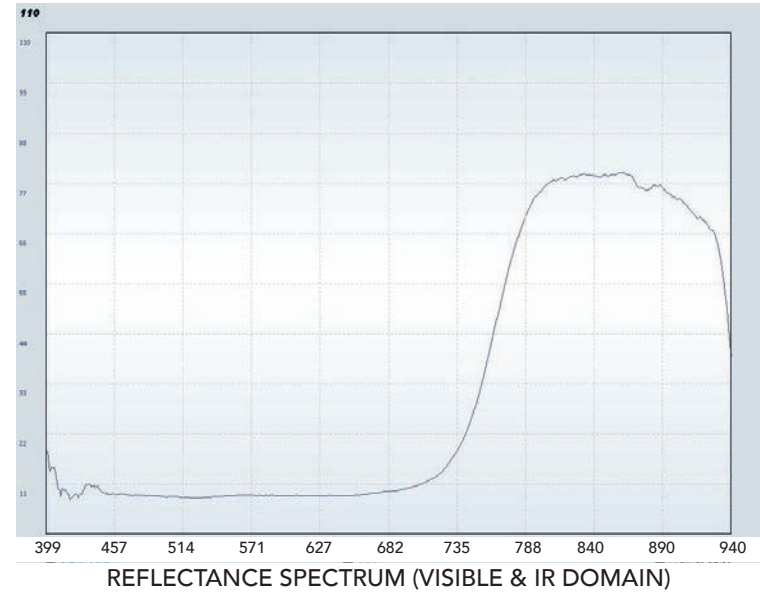


Kremer n° 10940
Antimony, stibium,
gray metallic, ba-
roque, 0 - 200 µm

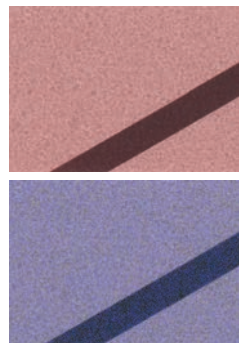
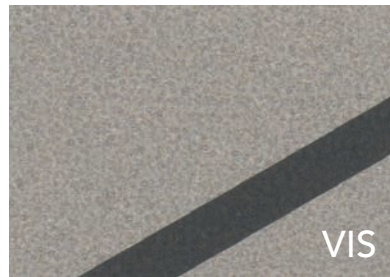


IRFC

UVFC

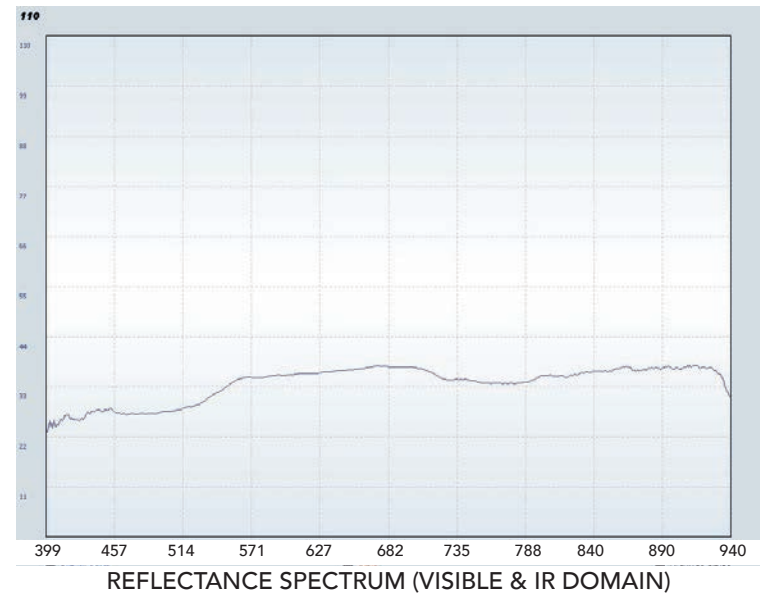


Kremer n° 11356
Gray from Mels
Switzerland

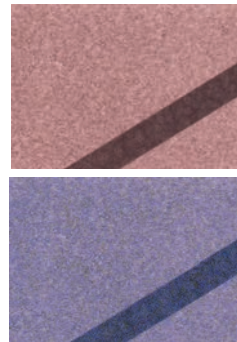


IRFC

UVFC

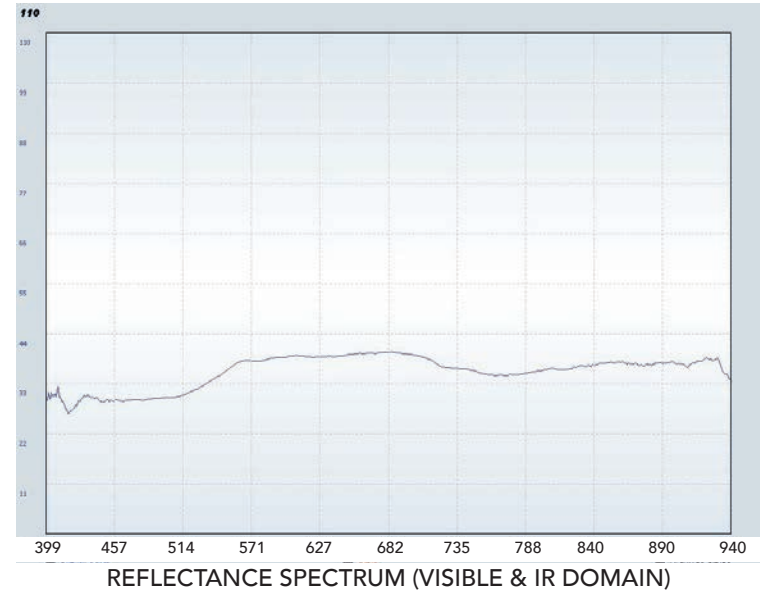


Kremer n° 11670
Onyx black
0 - 120 µm

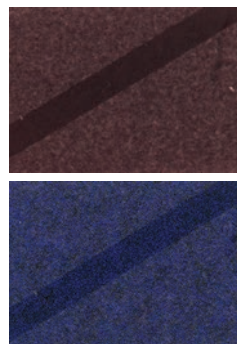


IRFC

UVFC

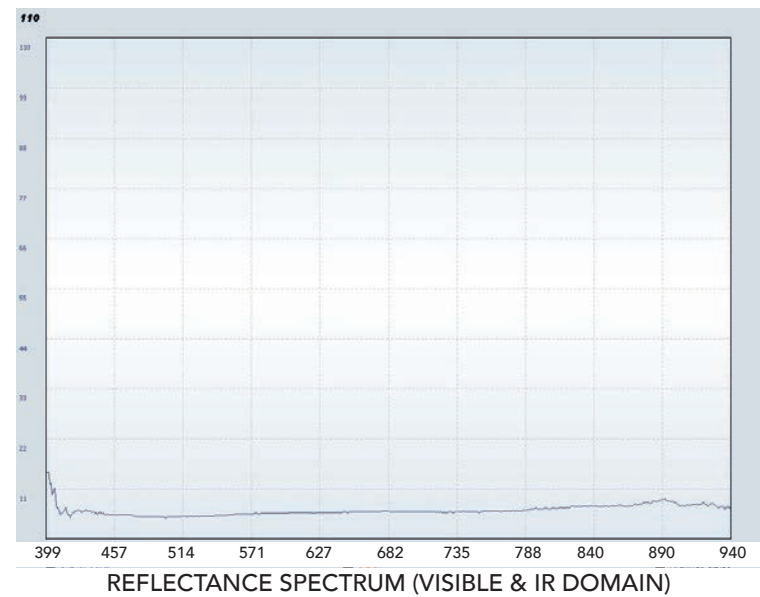


Kremer n° 12000
Ivory Black
Genuine Ivory Black
own production

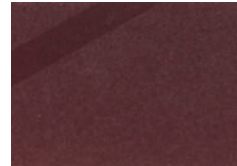
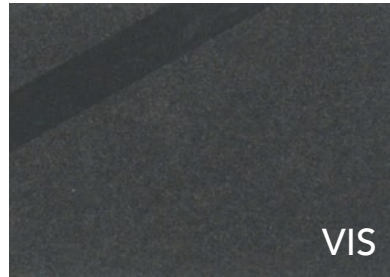


IRFC

UVFC



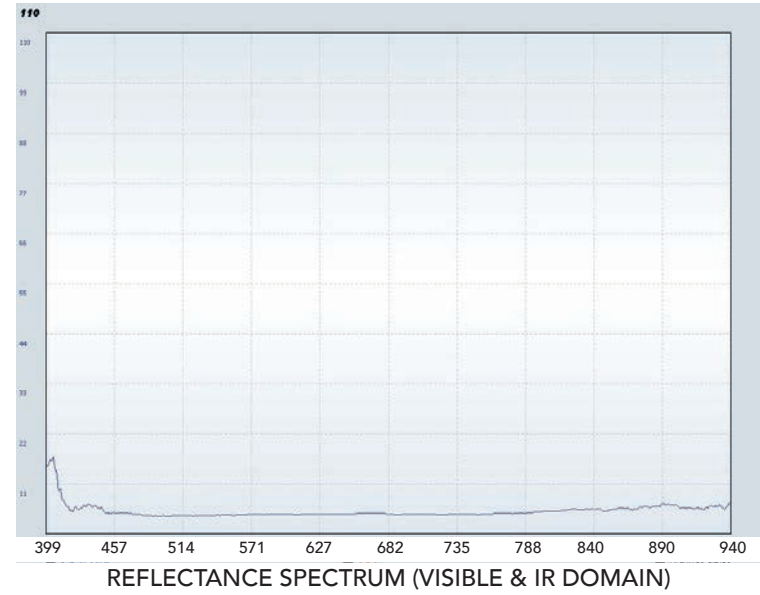
Kremer n° 12010
Peach Black
genuine, matt black



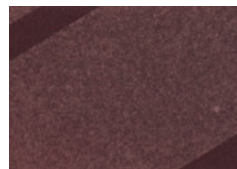
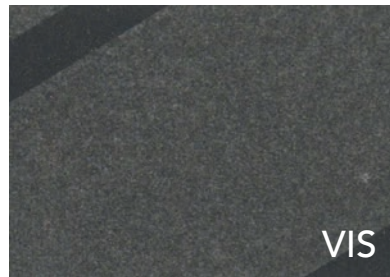
IRFC



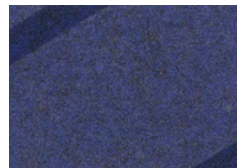
UVFC



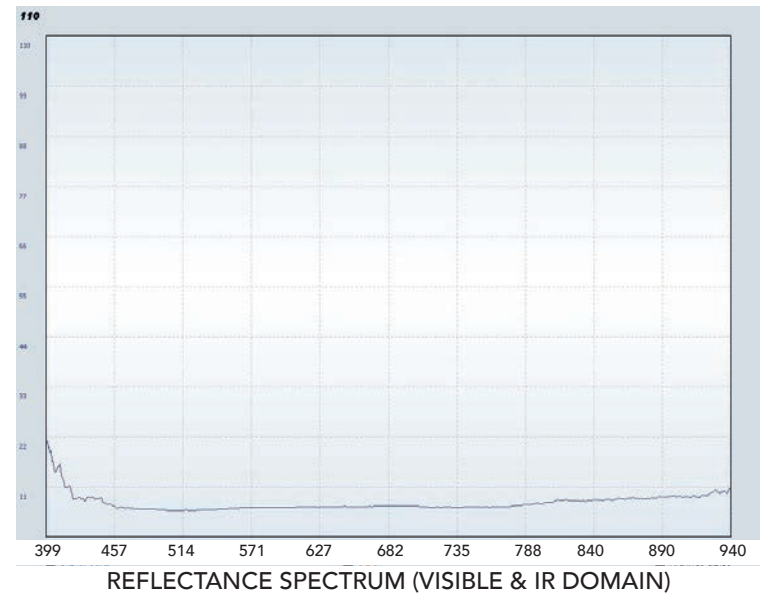
Kremer n° 12015
Grape Black
genuine, bluish-black



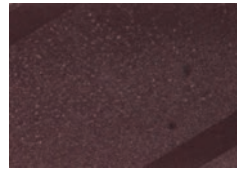
IRFC



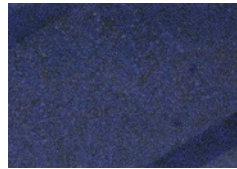
UVFC



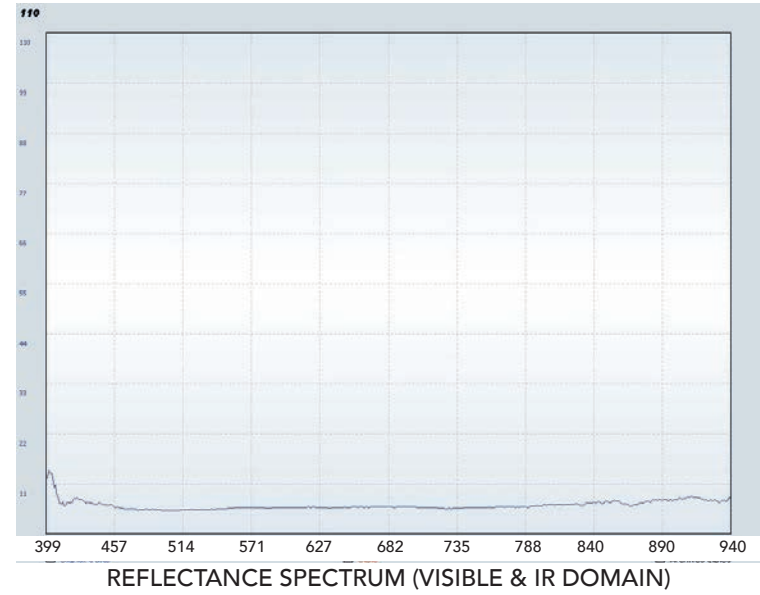
Kremer n° 12020
Cherry Black
genuine, brown-
ish-black



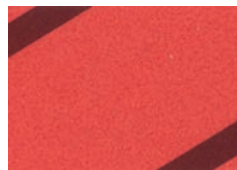
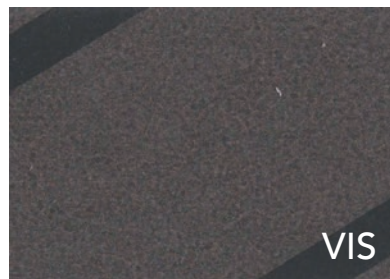
IRFC



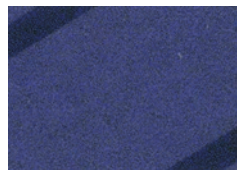
UVFC



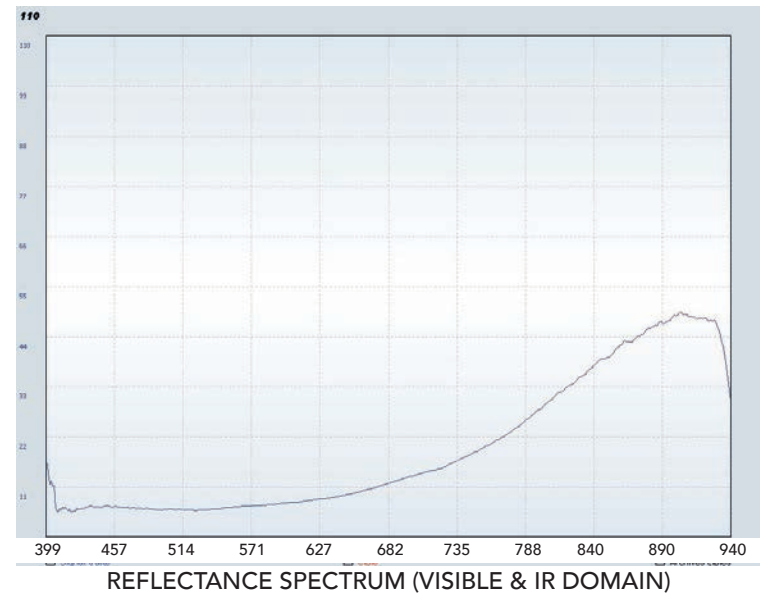
Kremer n° 12030
Atramentum
ink stone, black



IRFC



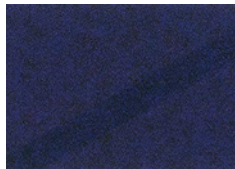
UVFC



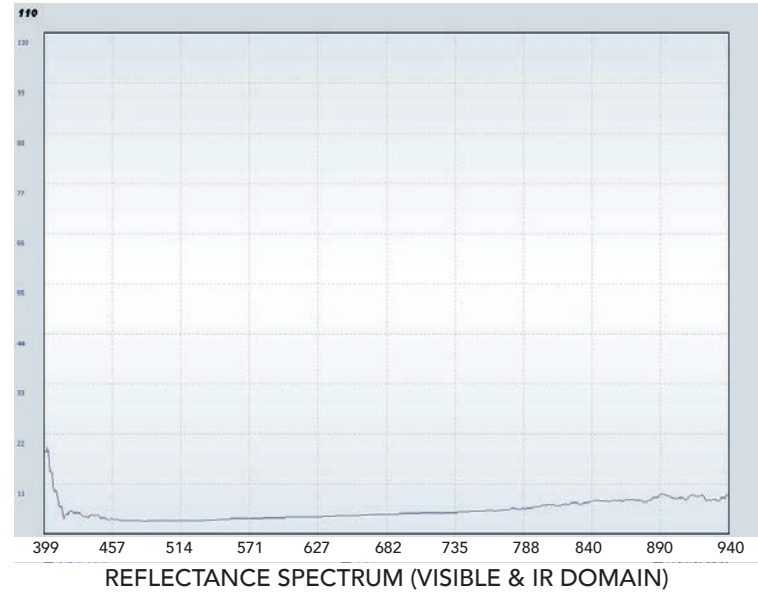
Kremer n° 12100
Bistre
genuine beechwood
soot



IRFC



UVFC



Kremer n° 12400
Sepia
from adriatic cuttle-
fish, raw, dry, 0-120 µm



IRFC



UVFC

