

# PIGMENT IMAGE DATABASE UNDER UV AND IR RADIATIONS

*Extract #4*

*Historical pigments : BLUE*

CENTRE DE  
RECHERCHE  
ET DE  
RESTAURATION  
DES MUSÉES  
DE FRANCE


Groupe Imagerie, département Recherche du C2RMF

Responsable groupe Imagerie : Clotilde Boust

Laurence Clivet, Jean-Louis Bellec, Jérôme Rumolo, Anne Wohlgemuth



## MISE EN GARDE CAUTION

Attention ! Nos données sont partagées à titre indicatif, et n'ont en aucun cas une valeur universelle. 

Nos données dépendent de plusieurs paramètres, notamment le matériel photographique utilisé, ainsi que le liant, le mélange, le vieillissement et la concentration des pigments. Avant d'utiliser ces données, merci de consulter notre article « Mémo des procédures photographiques » sur le site internet [www.copa.hypotheses.org](http://www.copa.hypotheses.org). Vous aurez ainsi accès à toute la chaîne de production de nos images. Nous vous conseillons d'utiliser ces données avec la plus grande précaution.

Please, notice our data are shared for information only and do not constitute a universal database.

Our data depend on several parameters, including the photographic material used (camera and filter), and the mixture, the aging, and the concentration of the pigments. Before using this data, please read our article “memo of the photographic procedures” on [www.copa.hypotheses.org](http://www.copa.hypotheses.org). You will have access to the whole production chain of our images.

Please use this data with caution.



## HISTORICAL PIGMENTS : KREMER PRODUCTION

### BLUE PIGMENTS

Kremer n° 10010	Smalt, very fine, according to a recipe from 1820, < 80 µm
Kremer n° 10060	Egyptian Blue, blue copper silicate, <120 µm
Kremer n° 10071	HAN-Blue, fine, the blue of ancient China, 0 - 40 µm
Kremer n° 10074	HAN-Purple, fine, < 40 µm, color of ancient China
Kremer n° 10180	Blue Verditer, synthetic Azurite, blue bice, cendres blue
Kremer n° 10184	Blue Bice, Copper Calcium Carbonate, CCC Blue
Kremer n° 10206	Azurite MP, pale, 38 - 63 µm
Kremer n° 10210	Azurite natural fine, 0 - 80 µm
Kremer n° 104201	Sodalite, fine, 0 - 80 µm, bluish-purple gray pigment
Kremer n° 10500	Lapis Lazuli, grayish-blue, natural ultramarine
Kremer n° 10530	Lapis Lazuli, pure, Fra Angelico Blue
Kremer n° 1056020	Lapis Lazuli from Chile, 0 - 20 µm

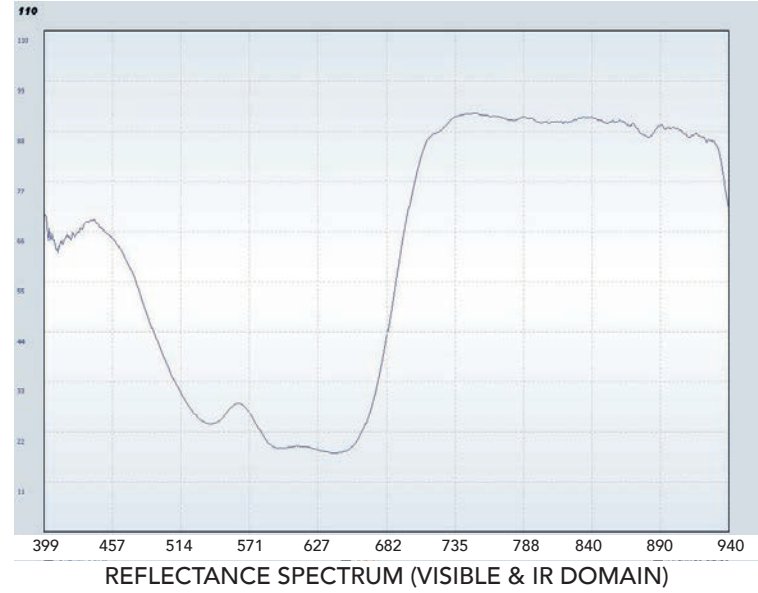
Kremer n° 10010  
 Smalt, very fine,  
 according to a recipe  
 from 1820, < 80 µm



IRFC



UVFC



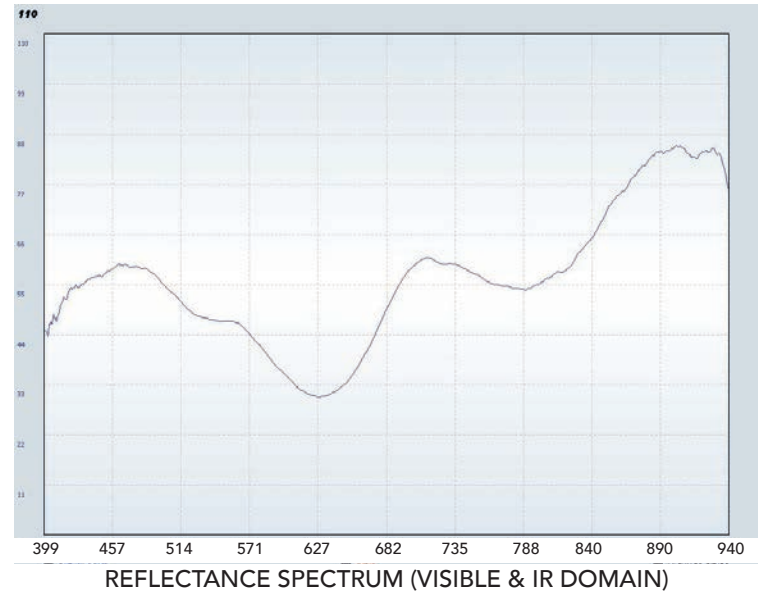
Kremer n° 10060  
 Egyptian Blue  
 blue copper silicate,  
 <120 µm



IRFC



UVFC

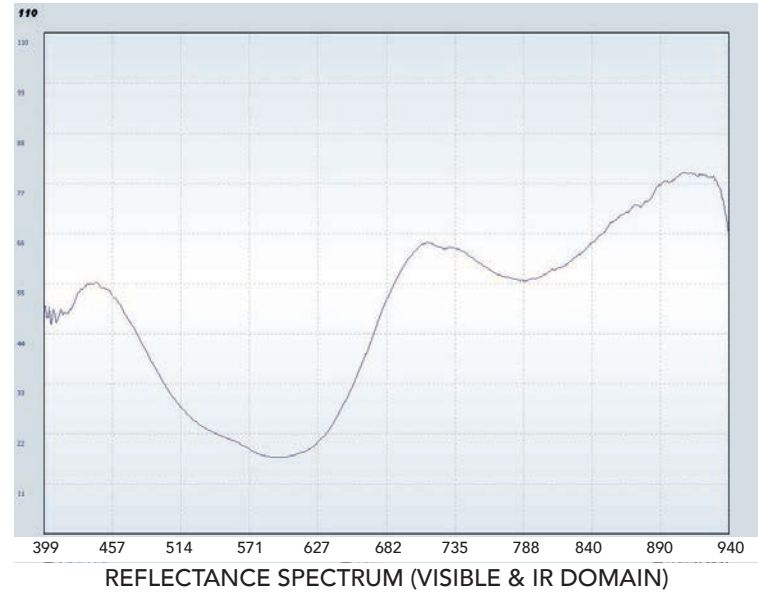


Kremer n° 10071  
HAN-Blue, fine  
the blue of ancient  
China, 0 - 40  $\mu\text{m}$



IRFC

UVFC

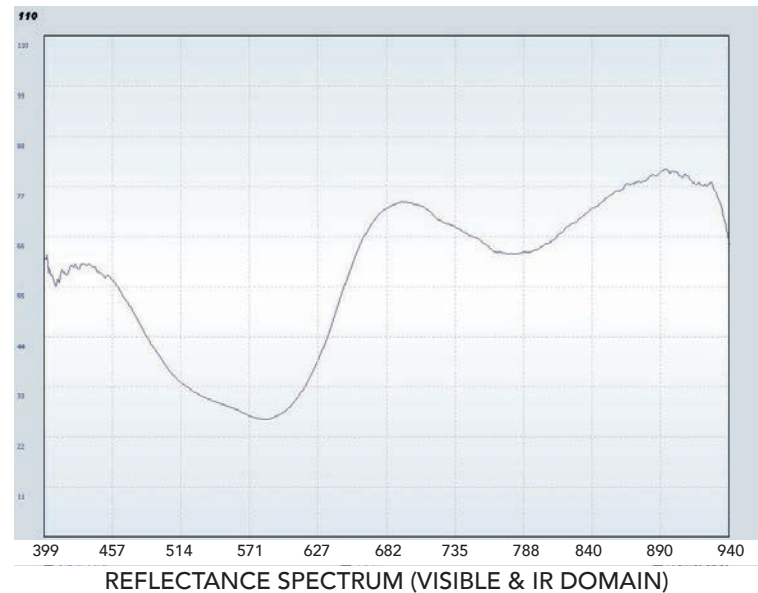


Kremer n° 10074  
HAN-Purple, fine  
< 40  $\mu\text{m}$ , color of  
ancient China

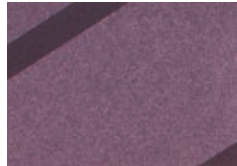


IRFC

UVFC



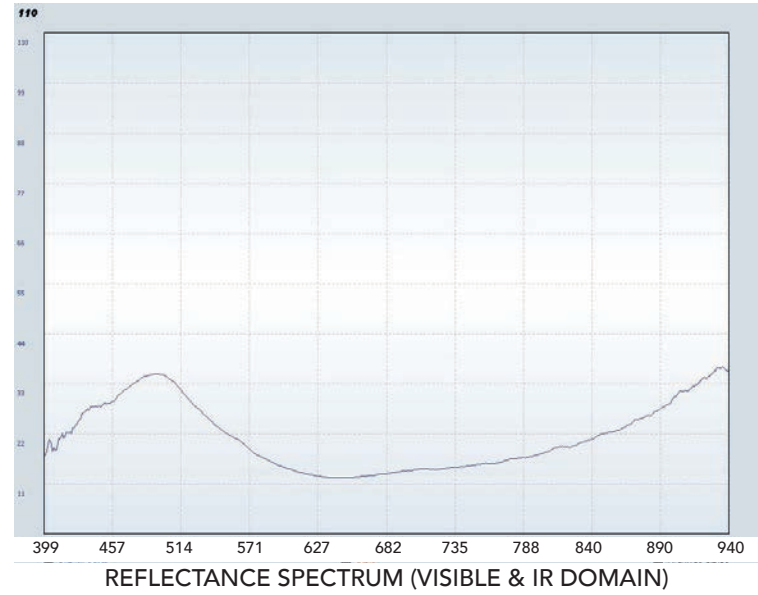
Kremer n° 10180  
Blue Verditer  
synthetic Azurite, blue  
bice, cendres blue



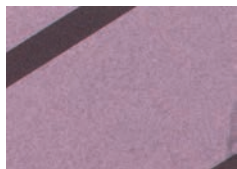
IRFC



UVFC



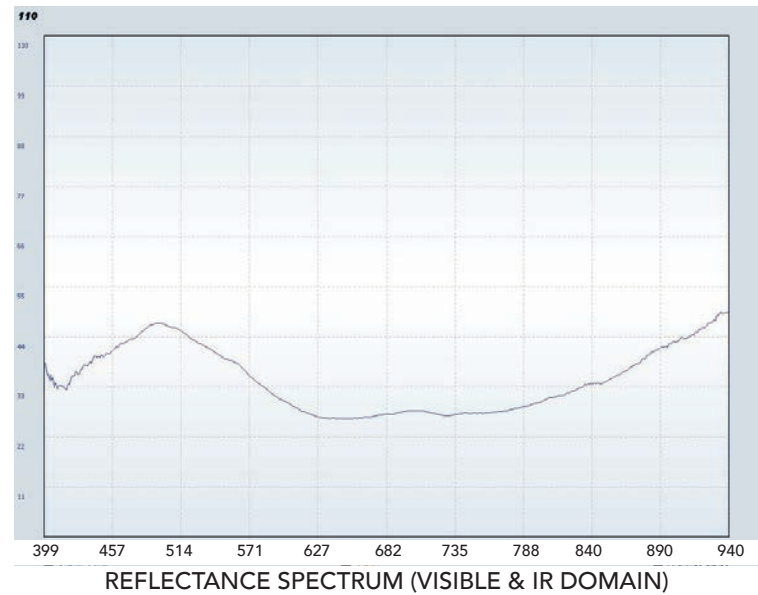
Kremer n° 10184  
Blue Bice, Copper  
Calcium Carbonate,  
CCC Blue



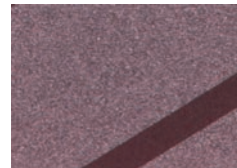
IRFC



UVFC



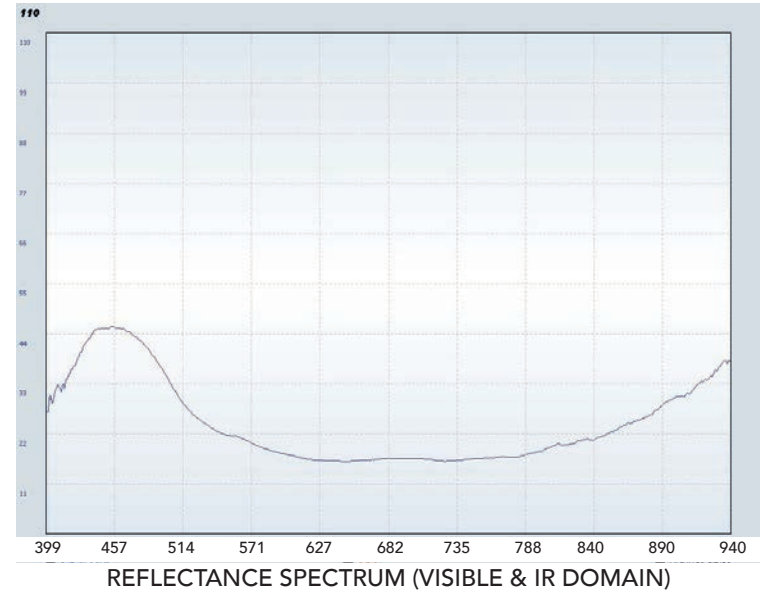
Kremer n° 10206  
Azurite MP, pale  
38 - 63  $\mu\text{m}$



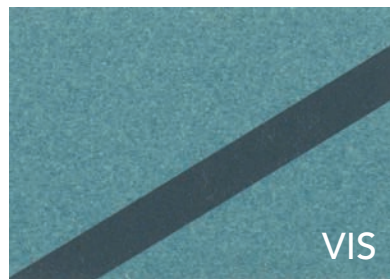
IRFC



UVFC



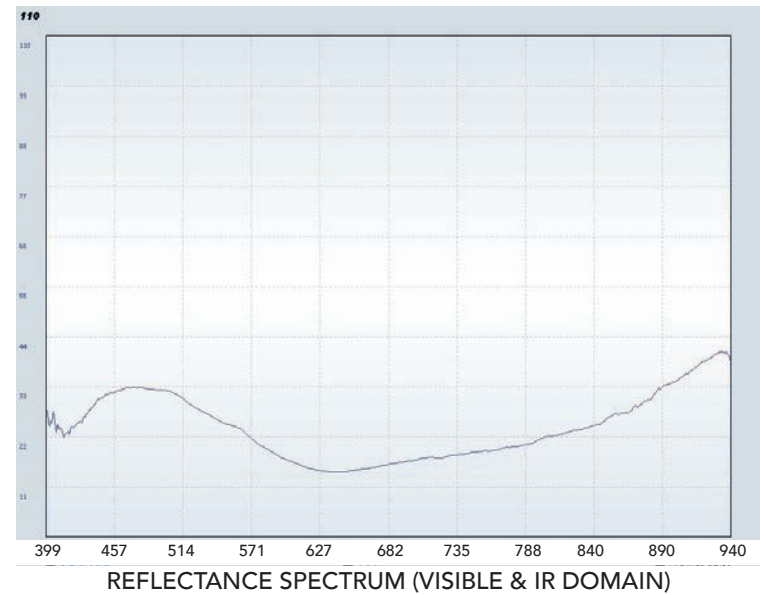
Kremer n° 10210  
Azurite natural fine  
0 - 80  $\mu\text{m}$



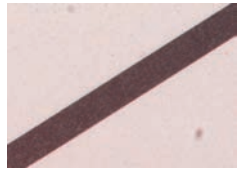
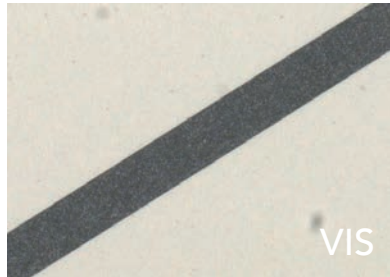
IRFC



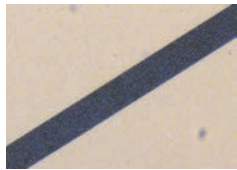
UVFC



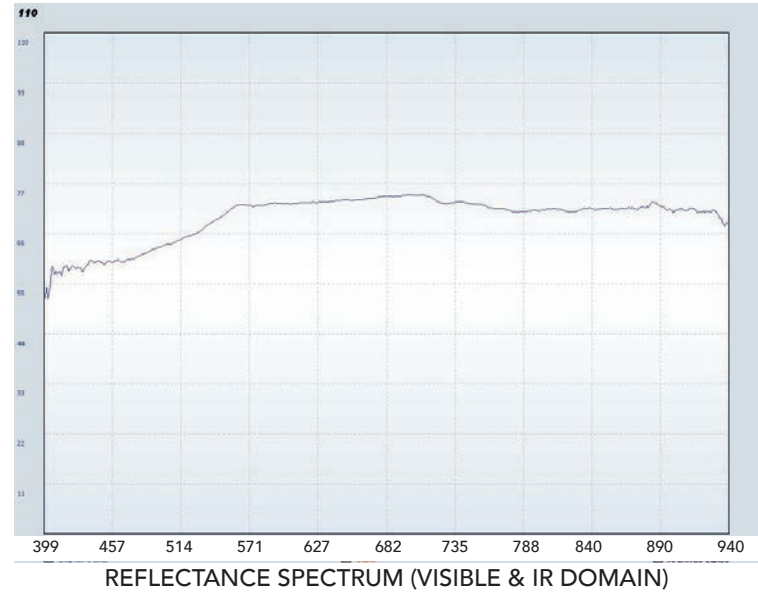
Kremer n° 104201  
Sodalite, fine  
0 - 80 µm , bluish-  
purple gray pigment



IRFC



UVFC



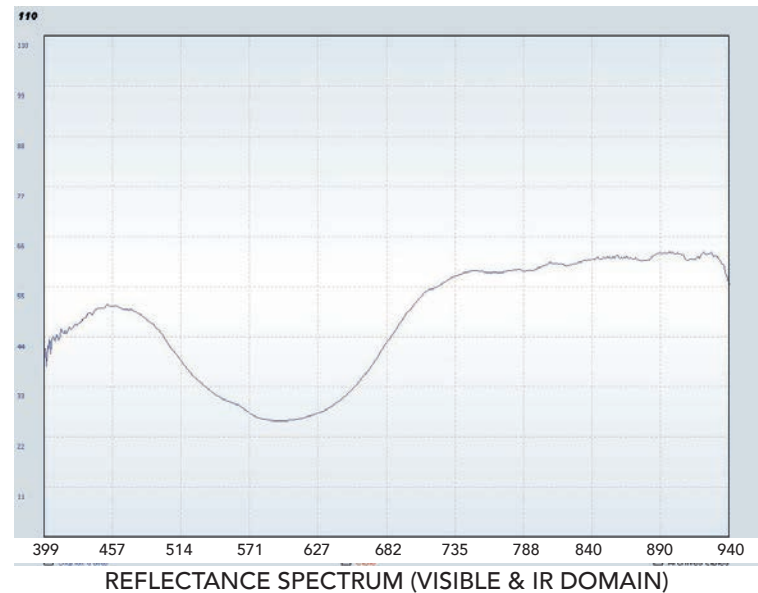
Kremer n° 10500  
Lapis Lazuli,  
grayish-blue, natural  
ultramarine



IRFC

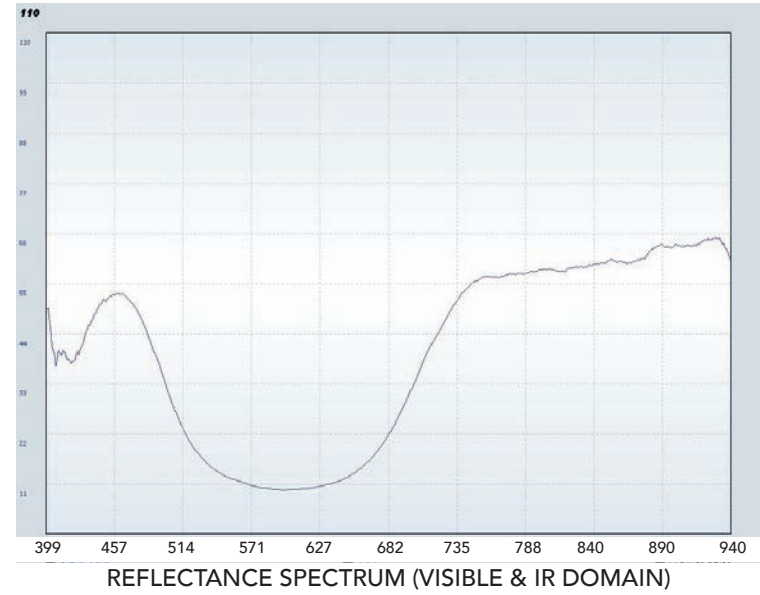
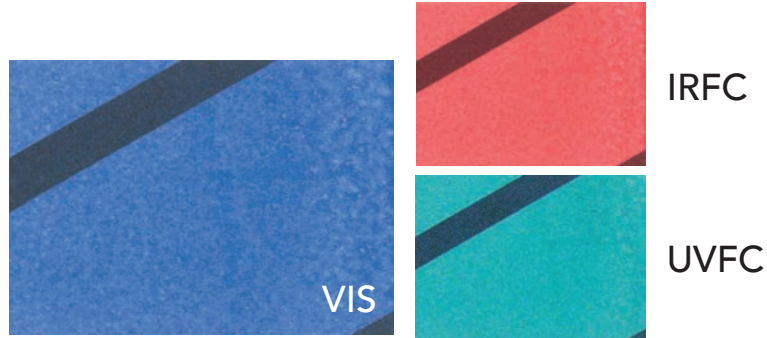


UVFC





Kremer n° 10530  
Lapis Lazuli, pure  
Fra Angelico Blue



Kremer n° 1056020  
Lapis Lazuli from  
Chile, 0 - 20  $\mu\text{m}$

