

# PIGMENT IMAGE DATABASE UNDER UV AND IR RADIATIONS

*Extract #3*

*Historical pigments : YELLOW*

CENTRE DE  
RECHERCHE  
ET DE  
RESTAURATION  
DES MUSÉES  
DE FRANCE


Groupe Imagerie, département Recherche du C2RMF

Responsable groupe Imagerie : Clotilde Boust

Laurence Clivet, Jean-Louis Bellec, Jérôme Rumolo, Anne Wohlgemuth



## MISE EN GARDE CAUTION

Attention ! Nos données sont partagées à titre indicatif, et n'ont en aucun cas une valeur universelle. 

Nos données dépendent de plusieurs paramètres, notamment le matériel photographique utilisé, ainsi que le liant, le mélange, le vieillissement et la concentration des pigments. Avant d'utiliser ces données, merci de consulter notre article « Mémo des procédures photographiques » sur le site internet [www.copa.hypotheses.org](http://www.copa.hypotheses.org). Vous aurez ainsi accès à toute la chaîne de production de nos images. Nous vous conseillons d'utiliser ces données avec la plus grande précaution.

Please, notice our data are shared for information only and do not constitute a universal database.

Our data depend on several parameters, including the photographic material used (camera and filter), and the mixture, the aging, and the concentration of the pigments. Before using this data, please read our article “memo of the photographic procedures” on [www.copa.hypotheses.org](http://www.copa.hypotheses.org). You will have access to the whole production chain of our images.

Please use this data with caution.



## HISTORICAL PIGMENTS : KREMER PRODUCTION

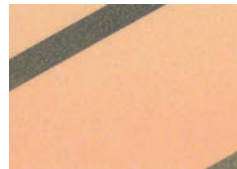
### YELLOW PIGMENTS

Kremer n° 10100	Lead Tin Yellow, light, < 38 $\mu\text{m}$ , light lemon changed hue, contains lead, toxic
Kremer n° 10110	Lead Tin Yellow deep, changed hue, < 38 $\mu\text{m}$ , contains lead, toxic
Kremer n° 10120	Lead Tin Yellow II, yellow lead glass, 0 - 63 $\mu\text{m}$ , contains lead, toxic
Kremer n° 10130	Naples Yellow, from Paris, < 50 $\mu\text{m}$ , contains lead, toxic
Kremer n° 10700	Orpiment, genuine, King s Yellow, coarse, 175 $\mu\text{m}$
Kremer n° 10800	Realgar, genuine, red orpiment, 175 $\mu\text{m}$
Kremer n° 11150	Epidote, yellow-green earth
Kremer n° 11520	Jarosite, clear yellow ochre, < 100 $\mu\text{m}$
Kremer n° 11540	Taunus Ochre, light, Ochre, from the Taunus region, Germany
Kremer n° 11572	Burgundy Yellow Ochre, from France, 0 - 80 $\mu\text{m}$
Kremer n° 116421	Yellow Moroccan Ochre, < 80 $\mu\text{m}$
Kremer n° 11650	Elba Brown Ochre Deep, dark brown, fine grind, from Tuscany

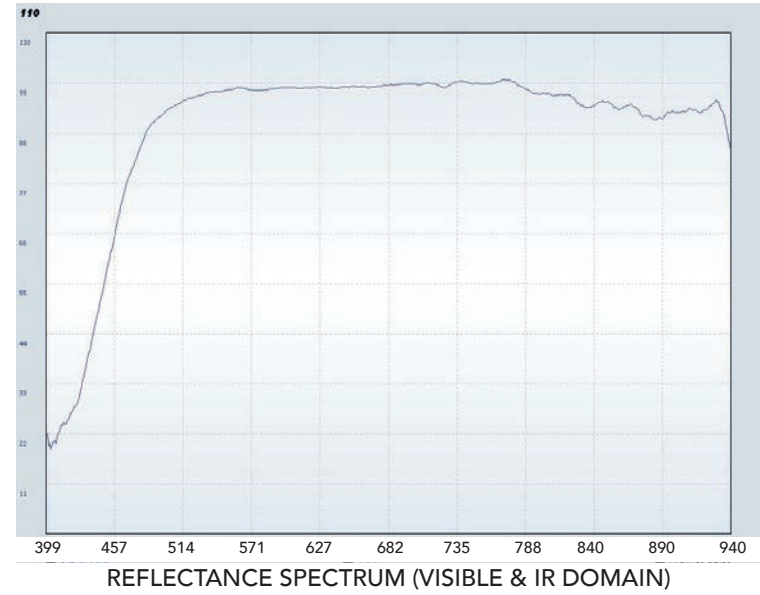
Kremer n° 10100  
 Lead Tin Yellow,  
 light, light lemon  
 changed hue, contains  
 lead, toxic. < 38  $\mu\text{m}$



IRFC



UVFC



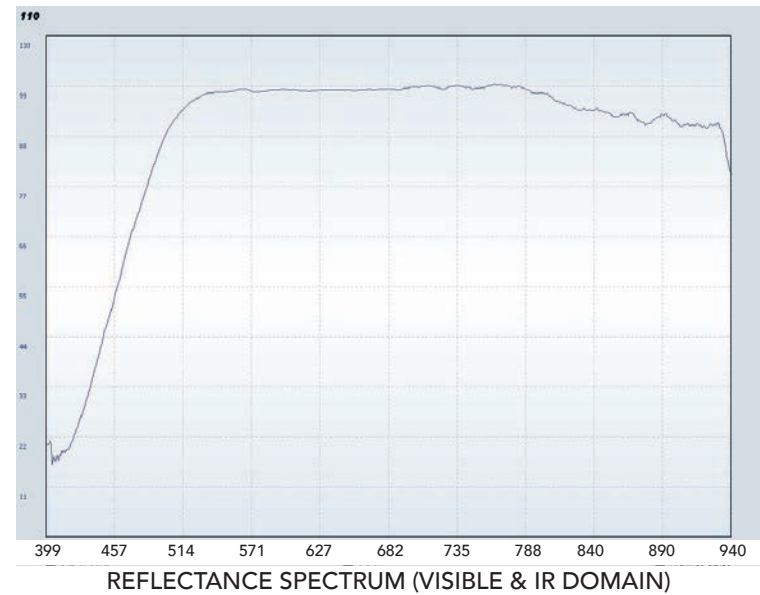
Kremer n° 10110  
 Lead Tin Yellow  
 deep, changed hue,  
 <38  $\mu\text{m}$  , contains lead,  
 toxic



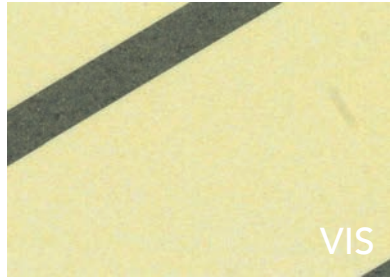
IRFC



UVFC



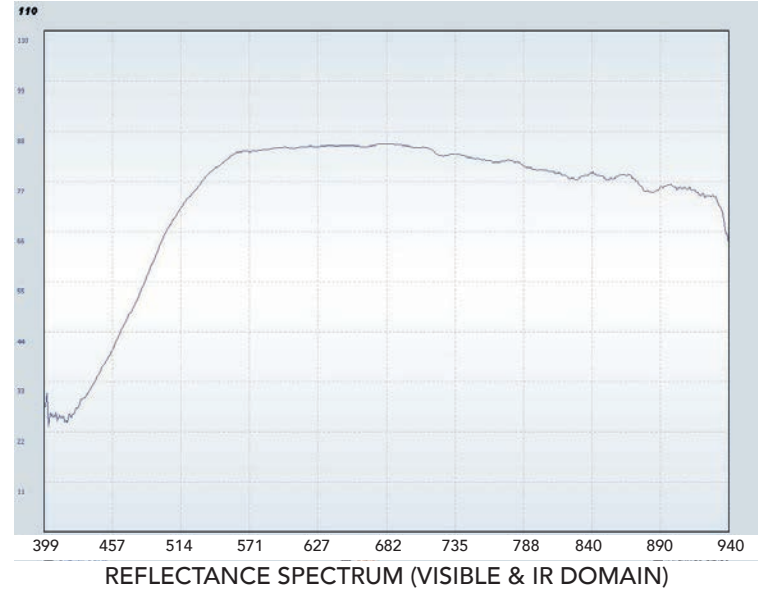
Kremer n° 10120  
Lead Tin Yellow II  
yellow lead glass, contains lead, toxic. 0-63  $\mu\text{m}$



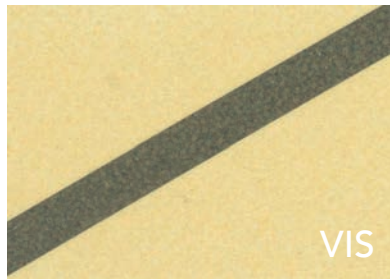
IRFC



UVFC



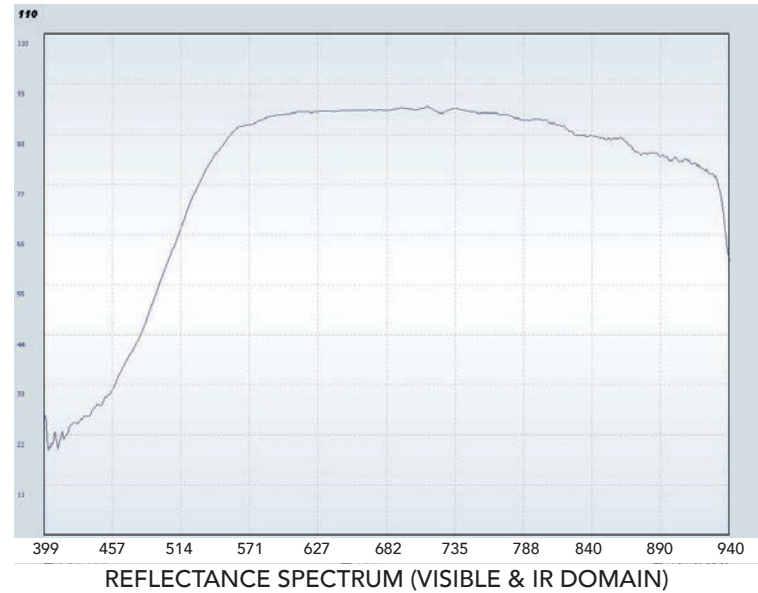
Kremer n° 10130  
Naples Yellow from Paris, < 50  $\mu\text{m}$ ,  
contains lead, toxic



IRFC



UVFC



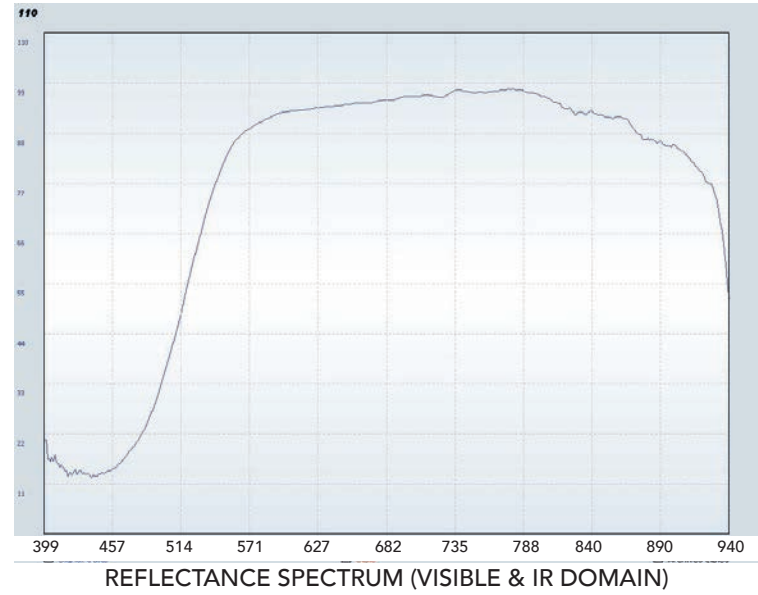
Kremer n° 10700  
Orpiment, genuine  
King s Yellow, coarse,  
175 µm



IRFC



UVFC



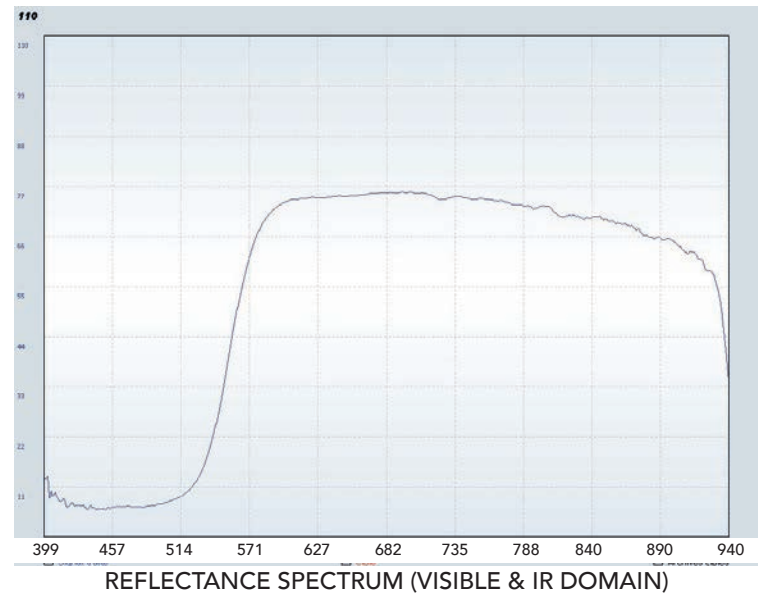
Kremer n° 10800  
Realgar, genuine  
red orpiment, 175 µm



IRFC



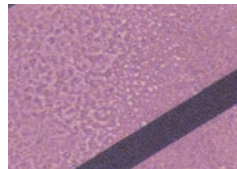
UVFC



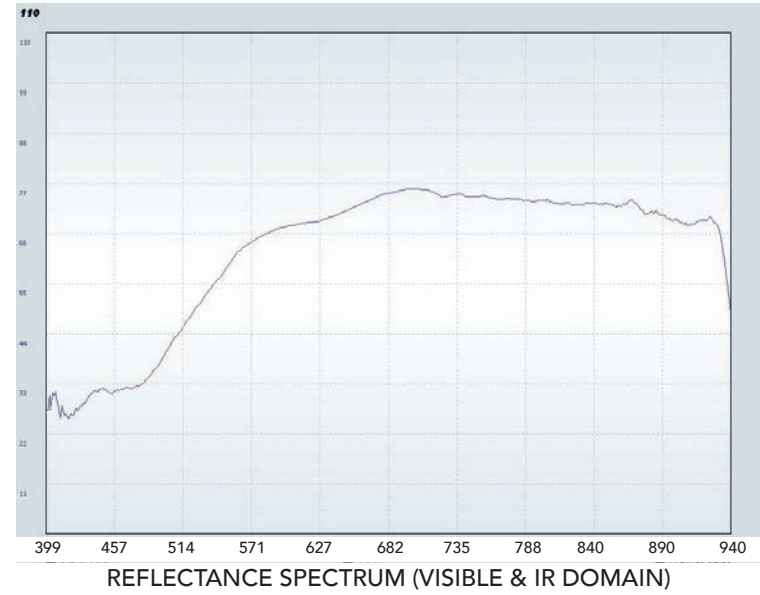
Kremer n° 11150  
Epidote  
yellow-green earth



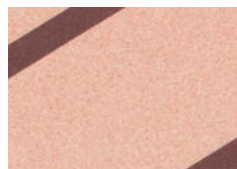
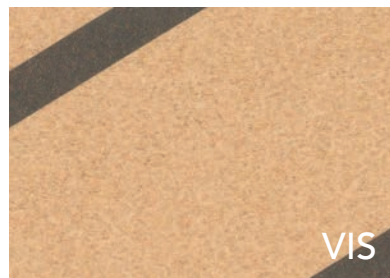
IRFC



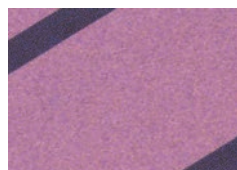
UVFC



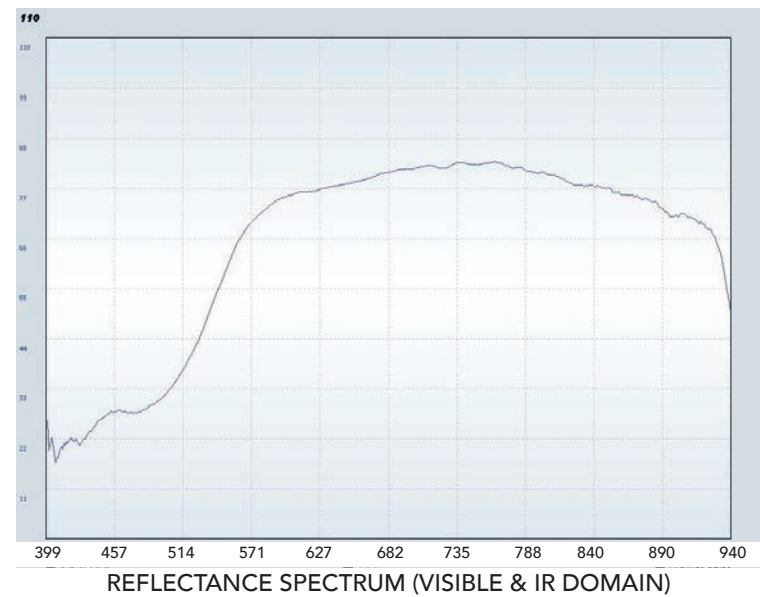
Kremer n° 11520  
Jarosite  
clear yellow ochre,  
< 100 µm



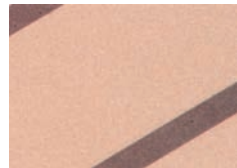
IRFC



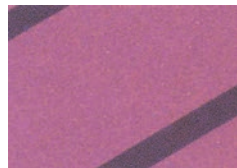
UVFC



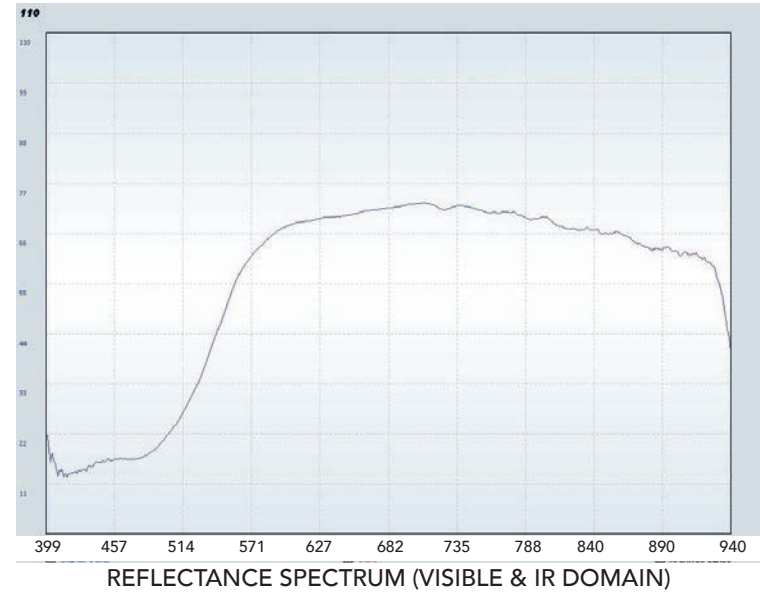
Kremer n° 11540  
Taunus Ochre, light  
Ochre, from the Taunus  
region, Germany



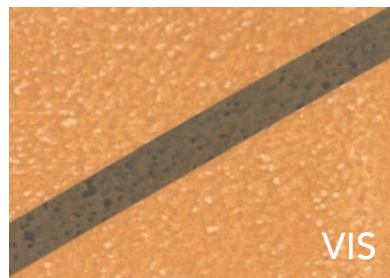
IRFC



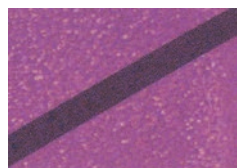
UVFC



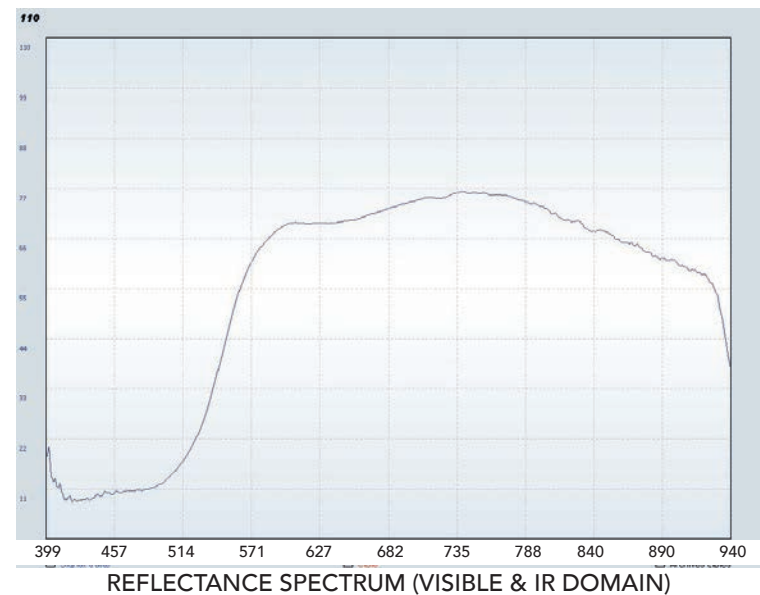
Kremer n° 11572  
Burgundy Yellow  
Ochre, from France,  
0 - 80  $\mu\text{m}$



IRFC



UVFC





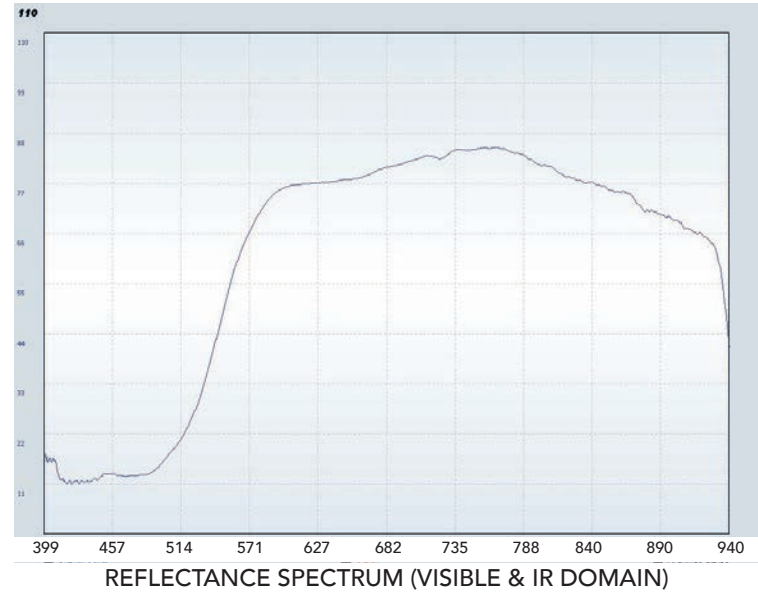
Kremer n° 116421  
 Yellow Moroccan  
 Ochre, < 80 μm



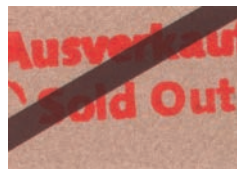
IRFC



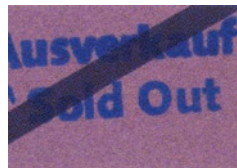
UVFC



Kremer n° 11650  
 Elba Brown Ochre  
 Deep, dark brown,  
 fine grind, from Tuscany



IRFC



UVFC

